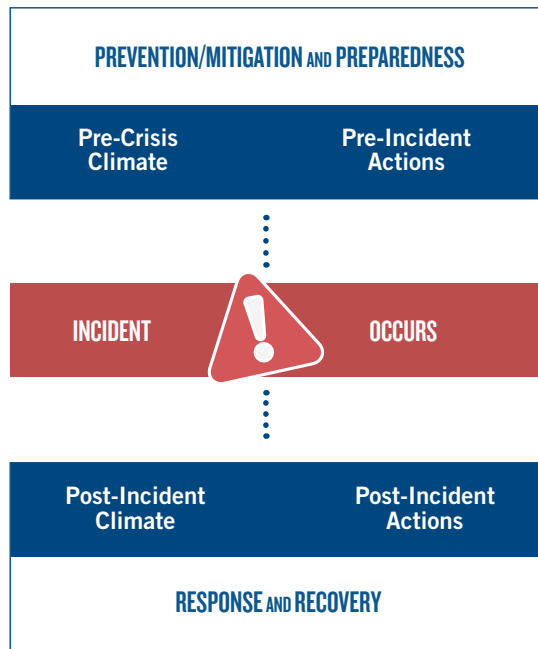


## EMERGENCY PLANNING

The Center for Safe Schools offers comprehensive, customized Emergency Response and Crisis Management (ERCM) services to assist and support schools across Pennsylvania and beyond in developing and improving comprehensive all-hazards plans in conjunction with their local emergency service organizations and agencies.



Emergency planning should be viewed as a never-ending cycle. A great deal of time is devoted to activities necessary to develop a comprehensive all-hazards plan. However, the work is not done once the plan is produced and distributed to school personnel. The plan must be tested through a series of drills and exercises designed to provide effective plan feedback. While most feedback obtained through this process will be positive, plan deficiencies will also be revealed. Plans must be updated to incorporate lessons learned during the drill and exercise testing.

## ABOUT THE CENTER FOR SAFE SCHOOLS

The Center for Safe Schools is recognized by the U.S. Department of Education, U.S. Office of Juvenile Justice and Delinquency Prevention and National Crime Prevention Council as one of 20 Statewide School Safety Centers in the nation. The Center employs diverse and well-qualified staff that are highly experienced in all aspects of school safety and youth violence prevention. ERCM staff hold an extensive array of certifications, expertise and practical knowledge and experience in prevention, mitigation, preparedness, response and recovery, with backgrounds in education, social services, emergency services, research/evaluation and law enforcement.

### THE CENTER'S ERCM TEAM:

- Delivers professional development opportunities addressing all aspects of emergency response and crisis management through regional, state and national conferences, on a fee-for-service basis, and through live and archived web-based sessions.
- Reviews all-hazards plans and offers specialized technical assistance to ensure plans adhere to state and federal statutes and guidelines.
- Provides an up-to-date list of emergency response and crisis management resources including books, programs, websites, campaigns and contact information for experts in the field.
- Assists districts in developing and implementing effective emergency response policies and procedures.
- Facilitates tabletop drills and assists schools and their local responders to develop functional and full-scale exercises to test their emergency response and crisis management plans and procedures.
- Provides practical resources and knowledge regarding comprehensive all-hazards plans, especially those related to the emergency response and crisis management components.

The Center for Safe Schools is part of the Center for Schools and Communities, a public, nonprofit education agency. The Center for Schools and Communities is a division of the Central Susquehanna Intermediate Unit and provides training, technical assistance, resources, grant administration and program evaluation to programs serving children, families and communities in Pennsylvania.

**SAFE  
SCHOOL  
ZONE**

# EMERGENCY RESPONSE AND CRISIS MANAGEMENT FOR SCHOOLS AND COMMUNITIES

## TRAINING & CONSULTATION

To schedule a training or consultation, contact the Center at [SafeSchools@csc.csiu.org](mailto:SafeSchools@csc.csiu.org) or (717) 763-1661 x164.

## ALL-HAZARDS PLANS

All-hazards planning addresses the four phases of emergency management.

## STAY ALIVE FIVE

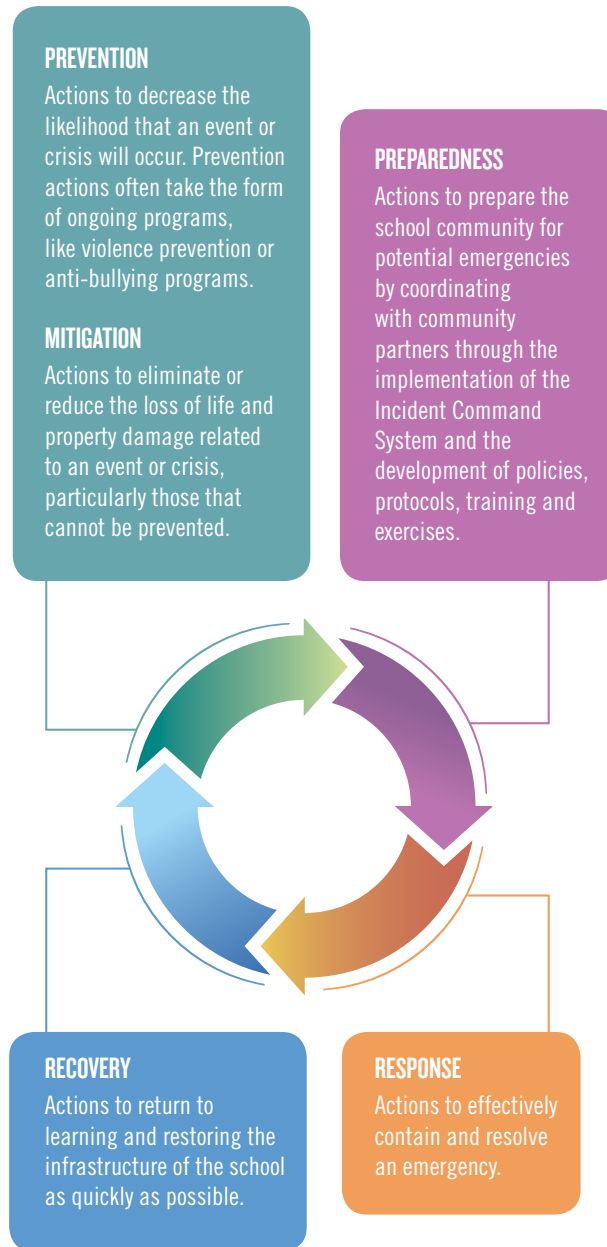
By planning, implementing and practicing the Stay Alive Five, faculty, staff and students increase their odds of survival in life or death emergencies.

### TRAINING TOPICS

- › Comprehensive All-Hazards Planning for Schools
- › Developing Effective MOUs
- › Drug Awareness and Concealment for Educators
- › Evacuation Decision Making
- › ICS-200 Overview and Test Preparation
- › Implementing ICS in Your School
- › Incident Response to Terrorist Bombings
- › Introduction to School Safety Planning
- › NIMS/ICS Bootcamp (IS-100 and IS-700 Overview and Test Preparation)
- › Orientation to School Safety
- › Parent/Child Reunification Planning
- › Preventing HazMat Events on School Campuses
- › Response to School Transportation Accidents
- › School Medical Response Team Training
- › School Safety Drills/Exercises for School Officials
- › School Security Officer Institute
- › Special Needs Considerations in School Emergencies
- › Stay Alive Five: Protective Actions for School Staff
- › Understanding and Planning for School Bomb Threats

### CUSTOMIZED CONSULTATION

- › All-Hazards Plan Development and Review
- › Climate and Safety Assessments
- › Emergency Drill and Exercise Facilitation and Evaluation
- › Institutionalizing Proactive Safety Measures in Partnership with Law Enforcement and Other Community Entities to Address Local Needs
- › Policy Review and Analysis



### EVACUATION

The prompt, safe and efficient movement of all students, staff and visitors out of a building when danger or potential danger exists.



### REVERSE-EVACUATION

The prompt, safe and efficient movement of students and staff into a building when danger or potential danger is present on the exterior of the school.



### SHELTER-IN-PLACE

Taking protective action from potential chemical or biological releases by staying indoors, restricting ingress and egress to the school and turning off fans, air conditioning and ventilation systems to reduce any potential for air contamination.



### SEVERE WEATHER PROCEDURES

Actions taken in a classroom or other area of the school to reduce the risk of injury or death from conditions such as severe thunderstorms and tornadoes.



### ACTIVE SHOOTER/INTRUDERS

Actions taken to mitigate danger from potential intruders, armed and unarmed, either within a school or in close proximity to the school.